



SHREDMASTER USER GUIDE

V1.1



INTRODUCTION.....	2
DISCLAIMER.....	2
WARNING LABELS.....	2
SAFETY WARNINGS.....	4
• NEVER hold forward button in the depressed position.....	4
GENERAL SAFETY PRECAUTIONS.....	5
SERVICE AND REPAIRS.....	6
WARRANTY.....	8
UNLOADING/UNPACKING.....	9
ELECTRICAL INSTALLATION.....	9
START-UP PROCEDURE.....	10
CLEARING A JAM.....	11
SHUT-DOWN PROCEDURE.....	11
MAINTENANCE & LUBRICATION.....	12
CUTTER STACK ADJUSTMENT.....	14
TROUBLE-SHOOTING.....	15
GREASE FITTINGS.....	18
MACHINE ASSEMBLY.....	18
CUTTER HEAD ASSEMBLY.....	19
CONTROL PANEL LAYOUT.....	20

INTRODUCTION

Congratulations on your selection of the Trinator ShredMaster! We want to help you to get the best results from your new trimmer and to operate it safely. This User Guide contains the information on how to do that; please read it carefully before you set up and use your trimmer.

We suggest you read the **Warranty** to fully understand coverage and your responsibilities of ownership. Keep this owner's manual handy, so you can refer to it at any time. This User Guide is considered a permanent part of the trimmer and should remain with the trimmer if resold. The information and specifications included in this publication are those that were in effect at the time of approval for printing. Eteros Technologies (Eteros) reserves the right, however, to discontinue or change specifications or design at any time without notice and without incurring any obligation whatever. No part of this publication may be reproduced without written permission.

DISCLAIMER

Eteros Technologies recognizes that the ShredMaster is a purpose-built machine for processing cannabis by licensed producers. Please check all municipal, provincial/state, and federal laws and regulations before using the ShredMaster. Eteros Technologies does not promote or condone the use of processing equipment in any way that may be deemed illegal

Eteros Technologies recognizes that our equipment can be used for processing herbs, hops, flowers, and many other products. It is not the responsibility of Eteros Technologies to confirm alternative applications for our equipment.

WARNING LABELS

Your safety and the safety of others are very important. We have provided important safety messages in this manual and on the Trimator Mini Dry. This information alerts you to potential hazards that could hurt you or others. Please read these messages carefully. Of course, it is not practical or possible to warn you about all the hazards associated with operating or maintaining a trimmer. You must use your own good judgment.

You will find important safety information in a variety of forms:

- **Safety Labels** - located on the trimmer.
- **Instructions** - how to use this trimmer correctly and safely.
- **Safety Messages** - preceded by a safety alert; a symbol and one of three signal words: DANGER, WARNING, or CAUTION.

	DANGER: Indicates a hazardous situation that, if not avoided, will result in serious injury and/or death. This signal word is to be limited to the most extreme situations; typically for machine components that, for functional purposes, cannot be guarded.
	WARNING: Indicates a potentially hazardous situation that, if not avoided, could result in serious injury and/or death. It includes hazards that are exposed when guards are removed. It may also be used to alert against unsafe practices.
	CAUTION: Indicates a potentially hazardous situation that, if not avoided, may result in minor or moderate injury. It may also be used to alert against unsafe practices.

Damage Prevention Messages - You will also see other important messages that are preceded by the word **NOTICE**. This word means:

NOTICE Your trimmer or other property can be damaged if you don't follow instructions.

SAFETY WARNINGS

- **ALWAYS** know where emergency stop buttons are located.
- **ALWAYS** know, or have quick access to, emergency phone numbers.
- **ALWAYS** ensure that all maintenance and operating personnel read and understand this manual, including those personnel working second or third shift.
- **ALWAYS** have a standard break-in time for a new operator. A minimum of two hours suggested.
- **ALWAYS** wear safety glasses when operating shredder.
- **ALWAYS** "lock out" power at the disconnect when shredder is not in use, when servicing shredder, or when performing routine shredder maintenance including cleaning.
- **NEVER** operate this or any other machine while under the influence of drugs, alcohol or medications.
- **NEVER** wear loose-fitting clothing, ties, or jewelry while in the vicinity of this shredder.
- **NEVER** allow long hair to be worn in the vicinity of the machine without use of a protective hair net.
- **NEVER** place any part of your body in or on any part of this machine while in operation.
- **NEVER** allow tools, rags, lunch pails, or debris to be placed on the input conveyor or on top of the machine.
- **NEVER** change machine direction without first allowing machine to come to a complete stop.
- **NEVER** allow other personnel within ten feet of this machine while in operation.
- **NEVER** remove guards, perform maintenance or clear jam-up debris without first locking out power disconnect or unplugging the machine.
- **NEVER** allow horseplay around machine.
- **NEVER** remove material from cutter heads while power is on.
- **NEVER** attempt to remove debris from input chute after material has begun to move toward cutter head.
- **NEVER** hold forward button in the depressed position.

GENERAL SAFETY PRECAUTIONS

KNOW THE SAFETY INFORMATION

Read and become familiar with the entire User Guide. Learn the equipment applications, limitations, and possible hazards.

KEEP GUARDS AND SHIELDS IN PLACE

Keep all guarding in place and in working order to protect both the device and the operator.

WORK IN A SAFE ENVIRONMENT

Do not use equipment in a dangerous environment or damp/wet locations. Never expose the control panel directly to rain or water. Keep the work area well-illuminated.

WORK AWAY FROM FLAMMABLE LIQUIDS OR GASES

Do not use the device in the presence of flammable liquids or gases.

KEEP THE WORK AREA CLEAN

Cluttered areas and workspaces invite accidents.

TRAINED OPERATORS ONLY

Keep children and bystanders away from the device. visitors should be kept at a safe distance from the work area.

DON'T FORCE THE EQUIPMENT

It will operate optimally and safely at the rate for which it was designed.

USE THE RIGHT TOOL

Don't force the device to do a job for which it was not designed.

WEAR PROPER APPAREL

Do not wear loose clothing, gloves, neckties, rings, bracelets, or other jewelry that may get caught in moving parts. Non-slip footwear is recommended. Wear a protective hair covering to contain long hair.

ALWAYS OPERATE DEVICE IN A WELL-VENTILATED AREA

Dust generated from certain materials can be a health hazard. Use a dust collection system whenever possible.

WEAR A FACE MASK OR DUST MASK

This device may produce dust or operate near other dust-producing machines. If dust extraction is not considered, a dust mask must be worn.

POWER DOWN AND DISCONNECT

Power down and disconnect equipment before servicing and when changing any accessories, consumables, or other components.

CHECK FOR DAMAGED PARTS BEFORE OPERATION

The equipment should be inspected prior to use to ensure proper operation in performing its intended function. Check for alignment of moving parts, binding of moving parts, breakage of parts, mounting, and any other conditions that may affect its operation. Any damaged part including guards should be properly repaired or replaced.

ALWAYS WEAR EYE PROTECTION

Safety goggles can protect your eyes from fast-moving debris.

ALWAYS WEAR EAR PROTECTION

Wear ear muffs or earplugs when operating loud machinery.

SERVICE AND REPAIRS

Repairs may only be carried out by Eteros Technologies or a designated authorized agent (service technician).

Should the need arise, please notify us:

Eteros Technologies

**6175 South Sandhill Road, Unit 600,
Las Vegas, NV 89120**

www.eteros.com

www.thetriminator.com

service@thetriminator.com

(530) 265 4277

Improper interfacing, improper repair, or an unauthorized modification could result in void warranty claims.

WARRANTY

Thank you for your purchase of the Trinator ShredMaster.

The Trinator Trinator ShredMaster is covered by our manufacturer's warranty as follows:

- Warranty coverage for one (1) year or 1,000 operating hours, whichever occurs first, on motors, electrical components, and the remainder of machine components.

The warranty period begins on the date the equipment is received by the customer. Any damage that occurs during shipping will be the responsibility of Trinator.

The above terms are valid if Trinator equipment is used and maintained as directed. If the equipment is modified in any way, all terms of this warranty are void. This warranty does not apply to cosmetic damage, such as scratches or general wear and tear.

Should you experience a technical problem with your equipment, please contact Eteros Technologies at the email or phone number outlined in the **Service and Repairs** section.

UNLOADING/UNPACKING

Exercise extreme caution at all times when handling equipment. NEVER allow any part of a person under the equipment or in any dangerous position.

- Using a lifting device with a minimum capacity of 3,000 pounds, remove the shredder from the carrier, and transport it to the installation site.

ELECTRICAL INSTALLATION



All electrical installation and service must be accomplished by qualified electrician(s). National and local electrical codes and ordinances, including safety precautions, must be followed.



LOCK OUT POWER IN OFF POSITION

1. All internal wiring has been factory installed and tested prior to shipping. Electrical installation consists of providing adequate machine power only.
2. Check building service to ensure the correct voltage is available and that those current requirements can be met according to nameplate located on the rear panel of the machine. Record the nameplate information in the space below.
3. Install receptacle to properly protect building's circuit. Select appropriate wire size and current protection to accommodate current requirements as shown on nameplate. Plug in power cable.

4. Clear all personnel from machine area. Ensure machine is clean and no tools, rags, or debris have been left on or near cutters or drive mechanism.
5. Turn building service drop power on. Check voltage at installed receptacle.
6. Turn on the machine and check for proper motor rotation. If running in reverse, unplug power cable. Check that power is OFF with voltage meter at panel. Remove any two power wires from the motor starter, reverse them, and reconnect.
7. Clear area, turn on power and recheck motor rotation. -Electrical installation is complete.
8. Replace all guards.

START-UP PROCEDURE

PRE-START-UP PROCEDURE

- Familiarize yourself with all controls and button locations. Ensure that all guards and covers are in place.
- Ensure the area is clean.
- Check input conveyor for debris, discarded tools, etc.

START-UP

1. Plug power cable into installed receptacle. Depress momentarily the FORWARD pushbutton. Cutters will begin to rotate and the output conveyor will begin to run forward.
2. To stop machine at any time depress the red "EMERGENCY STOP" pushbutton.
3. Begin feeding material to be shredded.

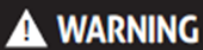
It is recommended that during the familiarizing period the operator should proceed with small amounts of media. After several hours experience the operator may wish to increase the amount of material being fed. The operator will soon be able to judge the efficiency of the operation and feed material accordingly. It is nearly inevitable that during this learning process the machine will jam. A jam condition will automatically change the rotation of the cutters to the reverse rotation for

approximately two seconds. Then the cutters will come to rest for approximately two seconds, then forward rotation automatically begins again. This automatic un-jamming process will occur three times and if an additional jam occurs the machine will shut off automatically, and will then require operator to follow proper lock out procedures to clear the jam from the machine.

CLEARING A JAM

Should a jam occur, the machine will automatically go in the reverse direction for approximately two seconds, then after a brief pause the machine will automatically start in the forward direction. This forward and reverse automatic process will occur three times to clear the jam, if the machine remains jammed after the third cycle the machine will automatically turn itself off.

1. Ensure that all personnel are clear of both the input chute and the cutter head.
2. Momentarily depress the yellow Reverse pushbutton. This will cause the cutters to run backwards for as long as the Reverse pushbutton remains depressed.
3. Release the Reverse pushbutton. The machine will come to a stop. After the machine has completely stopped, press the forward button and try to shred material.
4. If machine jams again, reverse shredder, Lock Out Power, and manually remove offending material.
5. Restart machine in the forward direction to resume operation.



NEVER Hold the forward button in the depressed position, as damage to the machine and the electrical system could occur.

SHUT-DOWN PROCEDURE

1. Allow conveyors to clear all material before shut down if applicable.
2. Depress E-Stop pushbutton. Remove power cable from receptacle.
3. Clean any remaining debris from the machine and from the immediate area.

MAINTENANCE & LUBRICATION



ALWAYS lock off power before cleaning, lubricating, maintaining, removal of any guard(s), and after shredding operation is complete.

WEEKLY - EVERY 40 HOURS OF OPERATION

- Inspect for any oil leaks around the spur gear oil bath or the gearbox reducers as applicable.
- Confirm that all guards are correctly installed.

MONTHLY - EVERY 160 HOURS OF OPERATION

- Grease all bearings using a high-temperature #2 lithium based grease, 1-2 pumps per bearing.
- Brush bearing grease on the spur gear teeth.
- Spray oil on the chain & check chain tension.
- Remove end shaft guards and check to ensure stack adjuster nuts are tight. Re-tighten if needed.
- Visually inspect cutters for damage.
- Confirm that all guards are correctly installed.

ANNUAL LUBRICATION

(Minimum of 200 hours of use, Maximum of 500hrs)

- Repeat steps from monthly lubrication.
- Drain oil from cycloidal reducer and refill with Shell Omala S2-GX synthetic industrial gear oil. Less than 1 gallon total will be needed (refer to Sumitomo manual in Appendix 1 for details).

LUBE SCHEDULE

ITEM	LUBE FREQUENCY	TYPE LUBE
Cycloidal Reducer	Drain and Refill Yearly, 200+Hrs	Shell Omala S2-GX Synthetic Industrial Gear Oil Less than 1 gallon total (Refer to Appendix 1)
Chain	Monthly	Monthly
Spur Gears	Monthly	Brush on Bearing Grease(Lithium)
Main Roller Bearings (4)	Weekly or every 20Hrs, whichever is less	High-temperature #2 Lithium based Grease 1-2 Pumps Per Bearing

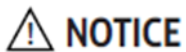
CUTTER STACK ADJUSTMENT



Confirm that machine is **Locked** out and **Tagged out** before starting any work on the machine.

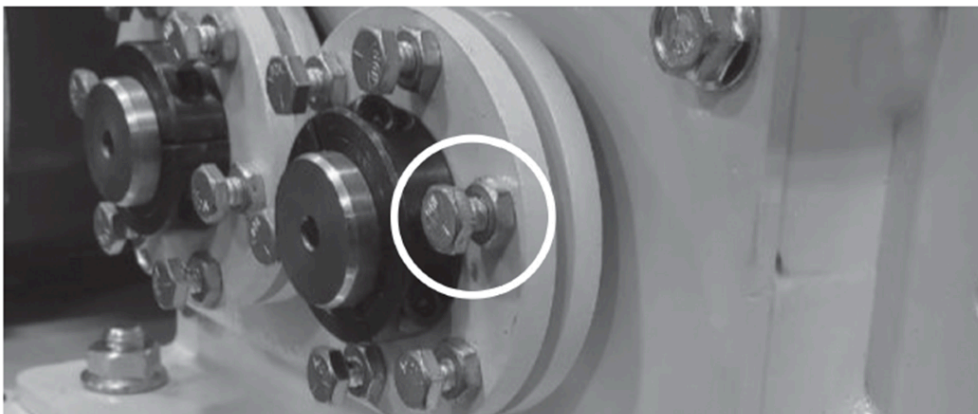
Cutter Stack tightness is factory set and should be checked if any of the following conditions exist:

- Shred capacity drops noticeably.
- Cutter Head becomes abnormally hot.
- Unusual noise being generated from cutter head.
- Noticeably large gap between two cutters.

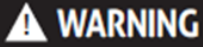


CUTTERS MUST BE AT ROOM TEMPERATURE WHEN MAKING ADJUSTMENTS. (BEST DONE WHEN THE SHREDDER HAS BEEN IDLE FOR SEVERAL HOURS)

1. Lock out machine power to prevent injury. ** Shut Down the Entire System and Lock Out the Power. Use proper lock Out and Tag Out Procedures **.
2. Remove End Guards. Replace before starting equipment
3. Check the two-piece clamp collars and make sure they are clamped securely to the shafts. Securely tighten any that are loose.
4. A circular plate with bolts are used to evenly tighten each stack. Tighten each bolt a small amount at a time to ensure that even pressure is being applied to the stack.



TROUBLE-SHOOTING



LOCK OUT POWER before performing any cleaning, oiling, maintenance, or trouble-shooting.

PROBLEM	POSSIBLE CAUSE	REMEDY
MACHINE WILL NOT TURN OFF USING STOP BUTTONS	<p>Defective STOP button.</p> <p>Contacts burned together in reversing contactor.</p>	<p>Check continuity (N.C.) If bad, replace.</p> <p>Check each leg of forward side of contactor for continuity. There should be no continuity. If there is, consult factory for replacement part.</p>
MACHINE WILL NOT RUN IN FORWARD OR REVERSE	<p>If power light is illuminated, proceed to possible cause #7.</p> <ol style="list-style-type: none"> 1. No power. 2. Key switch off. 3. Fuse blown in disconnect. 4. Overload tripped in panel. 5. Control transformer fuse blown. 6. STOP button stuck "in". 7. Loose wire in panel. 8. Defective contact block on STOP button. 	<p>Check power supply. Turn on.</p> <p>Remove each fuse and check for continuity. If bad, replace.</p> <p>Reset.</p> <p>Remove fuse and check for continuity. If bad, replace.</p> <p>Check buttons.</p> <p>Check terminal strip for disconnected or loose wires. Reconnect and tighten loose wires to proper location on strip.</p> <p>Check block for continuity. If bad, replace.</p>

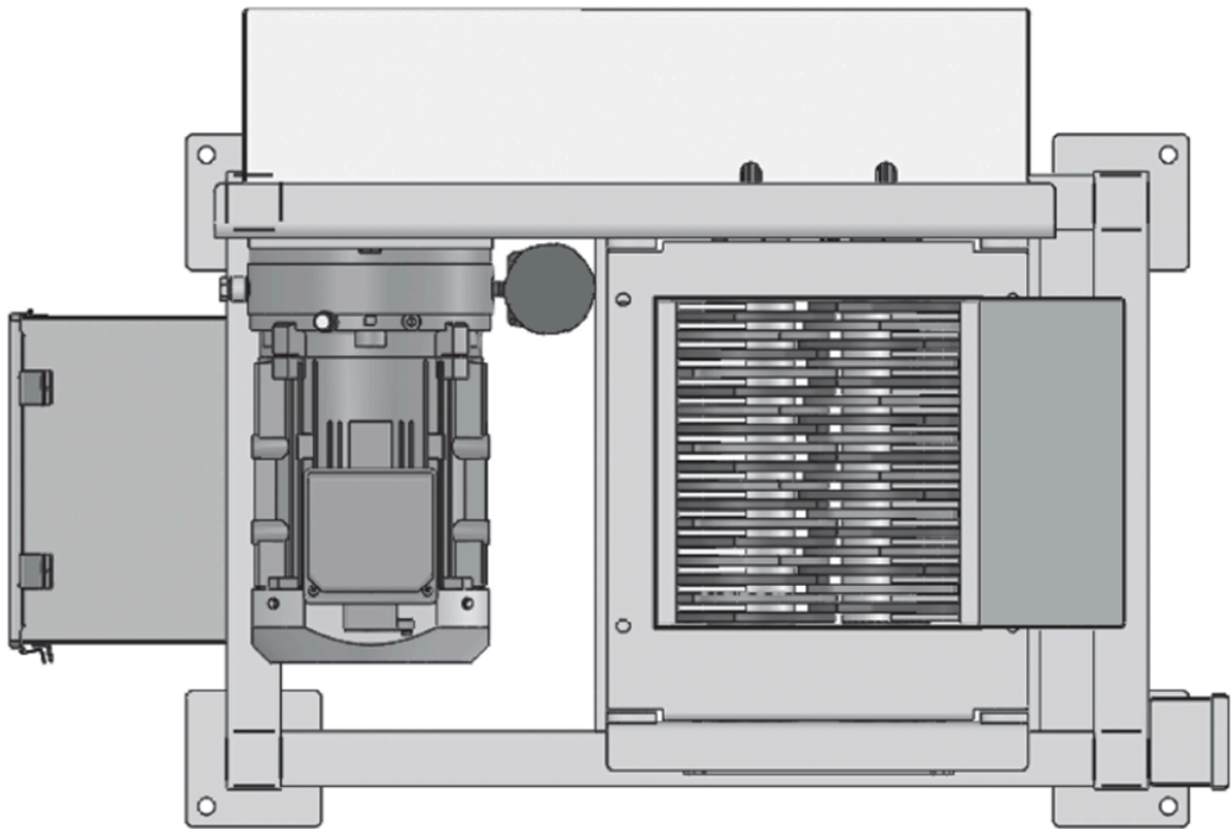
PROBLEM	POSSIBLE CAUSE	REMEDY
MOTOR HUMS OR BUZZES, BUT WILL NOT TURN IN EITHER FORWARD OR REVERSE	<p>One leg of the 3 phase power is dead (single phasing).</p> <p>Contacts burned in contactor and not making a connection on one leg.</p> <p>Defective motor.</p>	<p>Remove each fuse.</p> <p>Check for continuity in the power supply and disconnect.</p> <p>Consult factory for replacement contactor.</p> <p>Consult factory for replacement motor.</p>
OVERLOAD TRIPPING	<p>Low voltage.</p> <p>Current relay set too high.</p> <p>Motor overheating.</p> <p>Defective motor.</p>	<p>Check voltage.</p> <p>Consult factory.</p> <p>Check motor cooling fan for objects obstructing air flow.</p> <p>Conduct amperage test.</p> <p>Consult factory for replacement motor.</p>
MACHINE WILL NOT RUN IN FORWARD BUT WILL RUN IN REVERSE	<p>Defective forward button.</p> <p>Disconnected wire on forward button.</p> <p>Disconnected wire on current relay.</p> <p>Current relay stuck open.</p>	<p>Check contact block for continuity. If bad, replace.</p> <p>Check and reconnect.</p> <p>Check and reconnect.</p> <p>Clean relay. Free up center spool. Check continuity. If bad, consult factory for replacement relay.</p>

PROBLEM	POSSIBLE CAUSE	REMEDY
MACHINE WILL NOT RUN IN REVERSE BUT WILL RUN IN FORWARD	<p>Defective reverse button.</p> <p>Disconnected wire on reverse button.</p> <p>Defective coil in reverse side of contactor.</p>	<p>Check for continuity. If bad, replace.</p>
SHREDDING CAPACITY IS LOW	<p>Cutters are dull with rounded edges.</p> <p>Low voltage.</p> <p>Current relay set too low.</p> <p>Cutter Stack is Loose</p>	<p>New Sharp Cutters are needed.</p> <p>Check voltage at power supply.</p> <p>Consult factory before making any adjustments.</p> <p>Tighten Stackpusher Bolts</p>

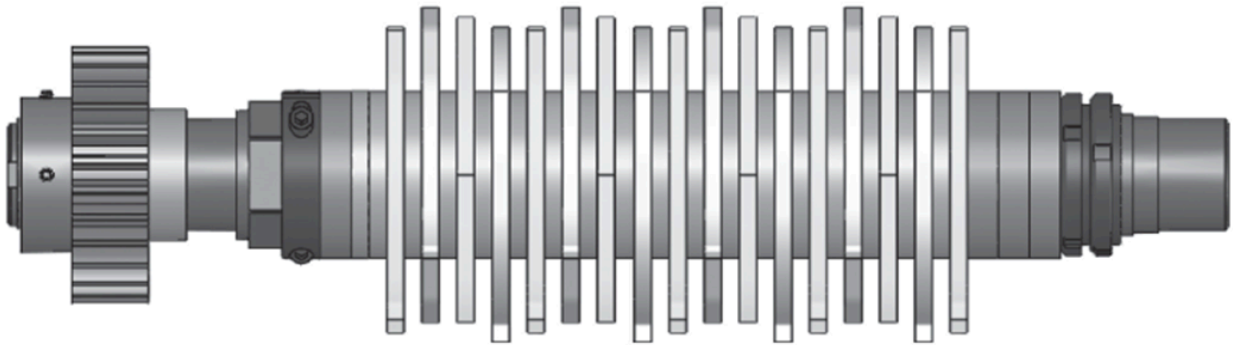
GREASE FITTINGS

- Ball Bearing Grease Fitting Locations (4 Grease Fittings)
- Grease Every week – 1 to 2 Pumps of Grease (See Lube Schedule pg.7)
- Appendix 1 at the end of this manual for oil quantities and oil type.

MACHINE ASSEMBLY



CUTTER HEAD ASSEMBLY



CONTROL PANEL LAYOUT

