



MINI DRY TRIMMER

USER GUIDE V1.0



CONTENTS

INTRODUCTION	2
DISCLAIMER	2
WARNING LABELS	2
SAFETY LABEL LOCATIONS	4
SERVICE AND REPAIRS	5
WARRANTY	6
TRIMMER SAFETY	7
GENERAL SAFETY PRECAUTIONS	8
SET UP	10
UNPACKING	10
CONTROLS AND COMPONENTS	10
OPERATION	11
BEFORE YOU BEGIN	11
PRE-TRIM SAFETY CHECK	11
STARTING THE TRIMMER	12
TRIMMING PLANT MATERIAL	13
TRIMMING TIPS	14
MAINTENANCE	15
CLEANING	16
DISASSEMBLE FOR CLEANING	16
CLEANING	17
REASSEMBLE AFTER CLEANING	17
TAKING CARE OF UNEXPECTED PROBLEMS	18

INTRODUCTION

Congratulations on your selection of the Trinator Mini Dry trimmer! We want to help you to get the best results from your new trimmer and to operate it safely. This User Guide contains the information on how to do that; please read it carefully before you set up and use your trimmer.

We suggest you read the **Warranty** to fully understand coverage and your responsibilities of ownership. Keep this owner's manual handy, so you can refer to it at any time. This User Guide is considered a permanent part of the trimmer and should remain with the trimmer if resold. The information and specifications included in this publication are those that were in effect at the time of approval for printing. Eteros Technologies (Eteros) reserves the right, however, to discontinue or change specifications or design at any time without notice and without incurring any obligation whatever. No part of this publication may be reproduced without written permission.

DISCLAIMER

Eteros Technologies recognizes that the Mini Dry Trimmer is a purpose-built machine for processing cannabis by licensed producers. Please check all municipal, provincial/state, and federal laws and regulations before using the Mini Dry Trimmer. Eteros Technologies does not promote or condone the use of processing equipment in any way that may be deemed illegal




Eteros Technologies recognizes that our equipment can be used for processing herbs, hops, flowers, and many other products. It is not the responsibility of Eteros Technologies to confirm alternative applications for our equipment.

WARNING LABELS

Your safety and the safety of others are very important. We have provided important safety messages in this manual and on the Triminators Mini Dry. This information alerts you to potential hazards that could hurt you or others. Please read these messages carefully. Of course, it is not practical or possible to warn you about all the hazards associated with operating or maintaining a trimmer. You must use your own good judgment.

You will find important safety information in a variety of forms:

- **Safety Labels** - located on the trimmer.
- **Instructions** - how to use this trimmer correctly and safely.
- **Safety Messages** - preceded by a safety alert; a symbol and one of three signal words: DANGER, WARNING, or CAUTION.

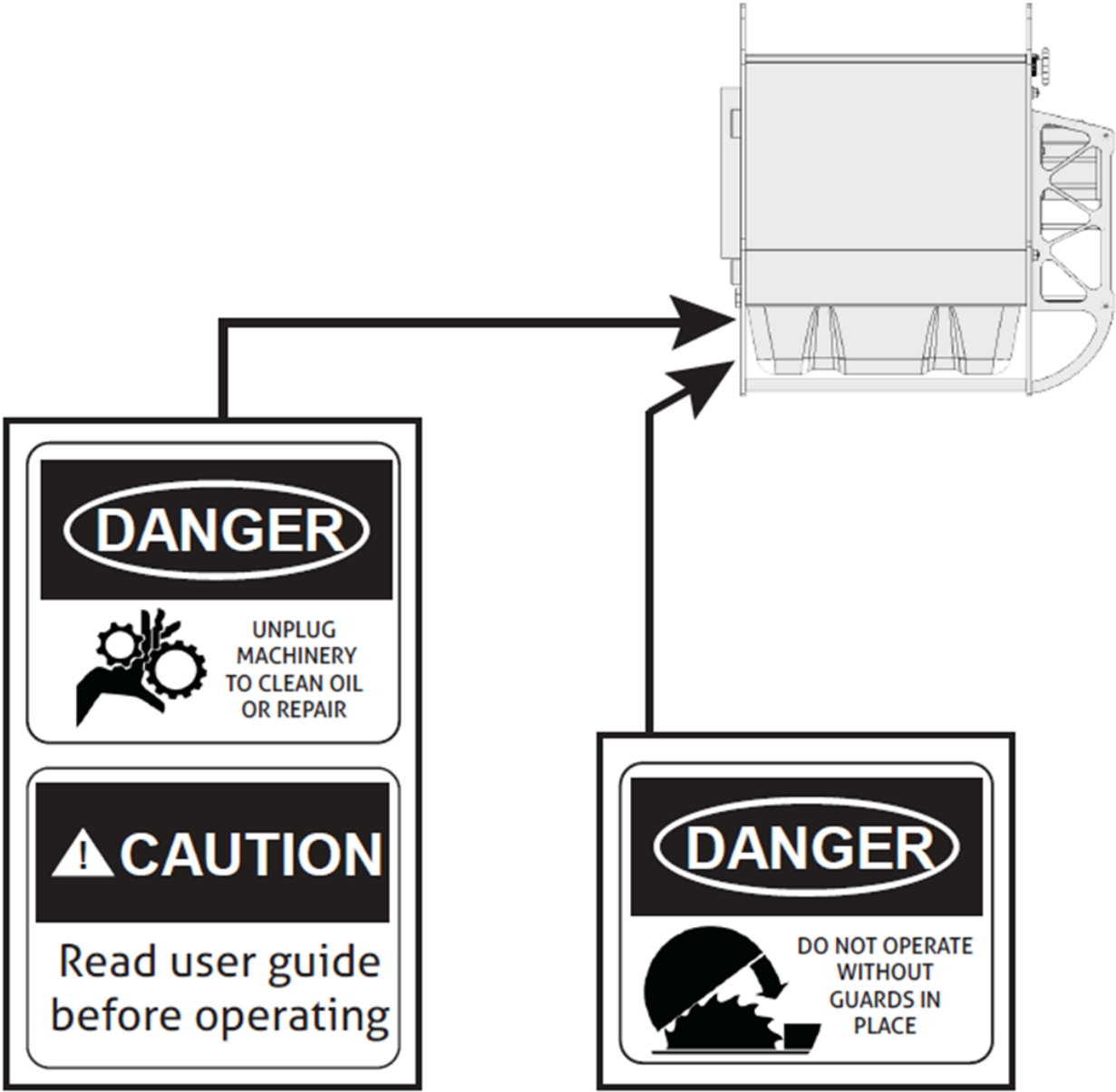
	<p>DANGER: Indicates a hazardous situation that, if not avoided, will result in serious injury and/or death. This signal word is to be limited to the most extreme situations; typically for machine components that, for functional purposes, cannot be guarded.</p>
	<p>WARNING: Indicates a potentially hazardous situation that, if not avoided, could result in serious injury and/or death. It includes hazards that are exposed when guards are removed. It may also be used to alert against unsafe practices.</p>
	<p>CAUTION: Indicates a potentially hazardous situation that, if not avoided, may result in minor or moderate injury. It may also be used to alert against unsafe practices.</p>

Damage Prevention Messages - You will also see other important messages that are preceded by the word NOTICE. This word means:

NOTICE Your trimmer or other property can be damaged if you don't follow instructions.

SAFETY LABEL LOCATIONS

The labels shown here contain important safety information. Please read them carefully. These labels are considered a permanent part of your trimmer. If a label comes off or becomes hard to read, promptly contact your authorized Triminators dealer for a replacement.



SERVICE AND REPAIRS

Repairs may only be carried out by Eteros Technologies or a designated authorized agent (service technician).

Should the need arise, please notify us:

Eteros Technologies
6175 South Sandhill Road, Unit 600,
Las Vegas, NV 89120

www.eteros.com
www.thetriminator.com
service@thetriminator.com
(530) 265 4277

Improper interfacing, improper repair, or an unauthorized modification could result in void warranty claims.

WARRANTY

Thank you for your purchase of the Trinator Mini Dry Trimmer Press.

The Trinator Trinator Mini Dry Trimmer is covered by our manufacturer's warranty as follows:

- No warranty on consumable parts, including shear band, tumbler, and trim-bin(s);
- Warranty coverage for one (1) year or 1,000 operating hours, whichever occurs first, on motors, electrical components, and the remainder of machine components.

The warranty period begins on the date the equipment is received by the customer. Any damage that occurs during shipping will be the responsibility of Trinator.

The above terms are valid if Trinator equipment is used and maintained as directed. If the equipment is modified in any way, all terms of this warranty are void. This warranty does not apply to cosmetic damage, such as scratches or general wear and tear.

Should you experience a technical problem with your equipment, please contact Eteros Technologies at the email or phone number outlined in the **Service and Repairs** section.

TRIMMER SAFETY

IMPORTANT SAFETY INFORMATION

Triminator trimmers are designed to trim excess plant material from a variety of herbal material. Other uses could result in injury to the operator or damage to the trimmer and other property. Injuries and property damage from trimmers can be prevented by following all instructions in this manual and on the trimmer. The most common hazards are discussed below, along with the best way to protect yourself and others.

AVOID ROTATING SLOTTED DRUM

The Triminator's slotted drum can cause serious damage, cuts and even amputate fingers or hands. Keep hands, arms, and body away from the slotted drum whenever the drum drive motor is running. Keep hair, clothing, and jewelry away from the drum. If you need to work around the trimmer to clear or clean plant material for any reason, always shut off the electric motor and disconnect the trimmer's power cord from the AC outlet. Use a wooden stick to remove any obstruction or debris. ***Never put your hand into the slotted drum while the machine is running; serious personal injury could result.***

AVOID SHEAR BAND

The Triminator's shear band can cause serious cuts and even amputate fingers and hands. Keep the diamond plate covers, red nameplate and clear end cap in place at all times while machine is operating. If you need to work around the trimmer to clear or clean plant material for any reason, always shut off the electric motors and disconnect the trimmer's power cord from the AC outlet.

CLEAR OPERATION AREA

Before operating the trimmer, carefully inspect the surrounding area and remove all obvious hazards that could cause you to trip, slip, or fall into the trimmer.

KEEP GUARDS AND SHIELDS IN PLACE

Guards and shields are designed to protect you from touching moving components. For your safety and the safety of others, keep all shields in place when the trimmer is running.

TURN ELECTRIC MOTOR OFF WHEN NOT OPERATING THE TRIMMER

If you need to leave the trimmer for any reason, always turn the electric motor off.

OPERATE ON FLAT SURFACE

To avoid overturning, only operate the trimmer on flat surfaces.

OPERATOR RESPONSIBILITY

Know how to stop the trimmer quickly in case of emergency. Understand the use of all trimmer controls. Never permit anyone to operate the trimmer without proper instruction. Do not let children operate the trimmer.

GENERAL SAFETY PRECAUTIONS

KNOW THE SAFETY INFORMATION

Read and become familiar with the entire User Guide. Learn the equipment applications, limitations, and possible hazards.

KEEP GUARDS AND SHIELDS IN PLACE

Keep all guarding in place and in working order to protect both the device and the operator.

WORK IN A SAFE ENVIRONMENT

Do not use equipment in a dangerous environment or damp/wet locations. Never expose the control panel directly to rain or water. Keep the work area well-illuminated.

WORK AWAY FROM FLAMMABLE LIQUIDS OR GASES

Do not use the device in the presence of flammable liquids or gases.

KEEP THE WORK AREA CLEAN

Cluttered areas and workspaces invite accidents.

TRAINED OPERATORS ONLY

Keep children and bystanders away from the device. visitors should be kept at a safe distance from the work area.

DON'T FORCE THE EQUIPMENT

It will operate optimally and safely at the rate for which it was designed.

USE THE RIGHT TOOL

Don't force the device to do a job for which it was not designed.

WEAR PROPER APPAREL

Do not wear loose clothing, gloves, neckties, rings, bracelets, or other jewelry that may get caught in moving parts. Non-slip footwear is recommended. Wear a protective hair covering to contain long hair.

ALWAYS OPERATE DEVICE IN A WELL-VENTILATED AREA

Dust generated from certain materials can be a health hazard. Use a dust collection system whenever possible.

WEAR A FACE MASK OR DUST MASK

This device may produce dust or operate near other dust-producing machines. If dust extraction is not considered, a dust mask must be worn.

POWER DOWN AND DISCONNECT

Power down and disconnect equipment before servicing and when changing any accessories, consumables, or other components.

CHECK FOR DAMAGED PARTS BEFORE OPERATION

The equipment should be inspected prior to use to ensure proper operation in performing its intended function. Check for alignment of moving parts, binding of moving parts, breakage of parts, mounting, and any other conditions that may affect its operation. Any damaged part including guards should be properly repaired or replaced.

ALWAYS WEAR EYE PROTECTION

Safety goggles can protect your eyes from fast-moving debris.

ALWAYS WEAR EAR PROTECTION

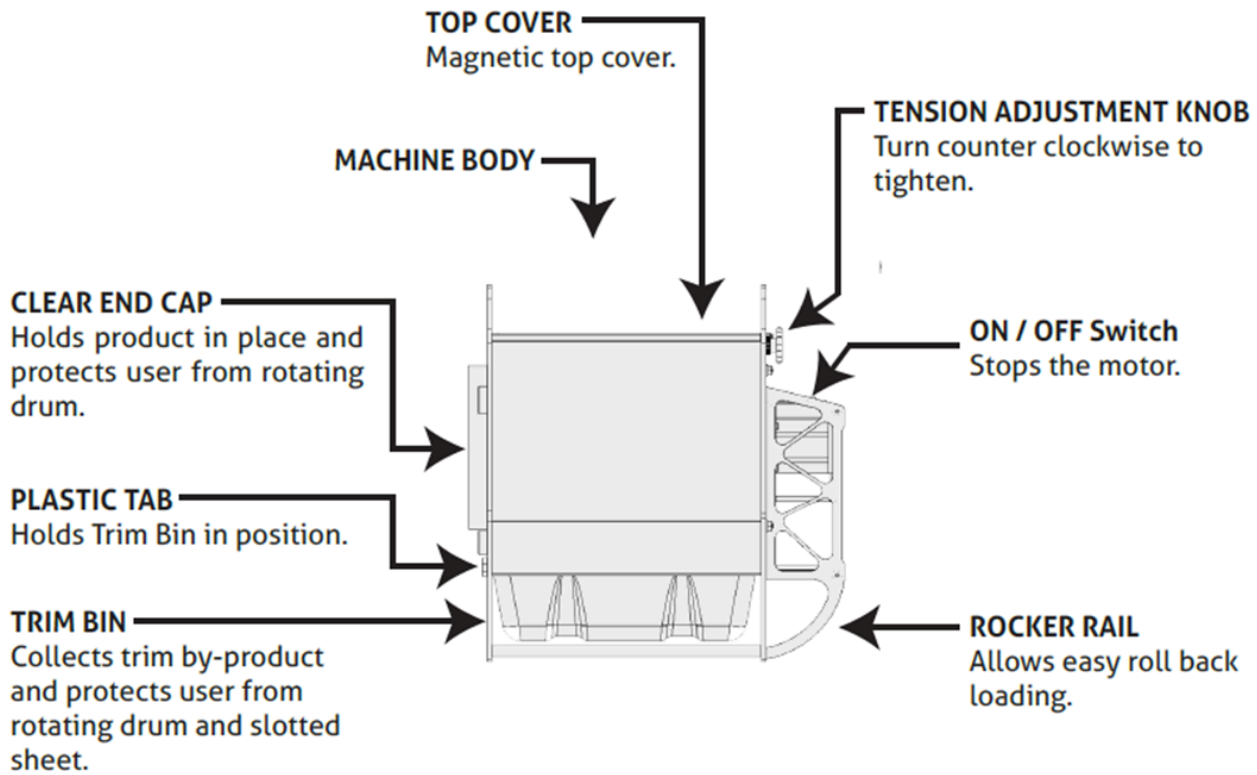
Wear ear muffs or earplugs when operating loud machinery.

SET UP

UNPACKING

Trinator Mini Dry does not require assembly.

CONTROLS AND COMPONENTS



OPERATION

BEFORE YOU BEGIN

CHECK YOUR WORK AREA

- For your safety and the safety of others, always inspect the area before operating the trimmer.
- Anything which can be grabbed by the rotating slotted drum is a potential hazard to you and others.
- Look for hazards and remove them from the work area.
- Tie back loose clothing and long, loose hair. Remove any jewelry.

SAFE OPERATING PRECAUTIONS

Refer to the **Trimmer Safety** section for safe operations.

Your safety is your responsibility.

PRE-TRIM SAFETY CHECK

For your safety, and to maximize the service life of your equipment, it is very important to take a few moments each time before you operate the trimmer to check its condition. Be sure to take care of any problem you find before you operate the trimmer.

Improperly maintaining this trimmer, or failing to correct a problem before operation, could cause a malfunction which could cause you to be seriously injured.

Always perform a pre-operation inspection before each operation, and correct any problem.

Before beginning your pre-operation checks, be sure the trimmer is on a level surface, the motor timer switch is in the OFF position, and all power cords are unplugged.

CHECK THE GENERAL CONDITION OF THE TRIMMER

- Clean the slotted drum, shear band, and tension system. Look for signs of damage.
- Check each control for proper operation.
- Check parts for wear. Replace if necessary.
- Check that all nuts, bolts, and clamps are tightened appropriately.

KEEP ALL SHIELDS AND COVERS IN PLACE WHILE OPERATING THE TRIMMER.

STARTING THE TRIMMER

CONNECT POWER CORDS

1. Connect the Trinator Mini Dry's power cord to a 15 amp 120 vac AC circuit. Do not connect and disconnect the power cord with wet hands. Do not operate in the rain.

NOTICE The Trinator machine draws a maximum of 3 amps.

STARTING THE MACHINE

1. Push the Trinator motor switch to the ON position.

STOPPING THE MACHINE

To stop the Trinator in an emergency, or at any other time, push the motor switch to the OFF position.

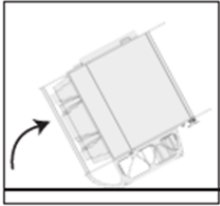
DISCONNECT POWER CORDS

1. Disconnect the trimmer's power cord.

NOTICE Be sure to hold the plug when disconnecting the power cord from the electrical outlet. Do not disconnect by pulling on the power cord.

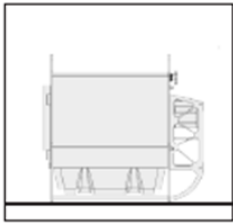
TRIMMING PLANT MATERIAL

LOAD



Remove clear end cap from front of drum. Rotate machine backward into a vertical and upward facing position. Load dried, prepped, untrimmed plant material into the drum. For best efficiency run batches of similar material.

RUN



Rotate machine forward into a horizontal position. Turn machine ON and allow to run for 1-15 minutes. Check material every 2-5 minutes. For a closer trim, continue running the Trimator Mini Dry until desired trim is accomplished.

EMPTY DRUM

Once desired trim is accomplished, remove clear end cap, position separate container (not included) to capture processed material, turn on trimmer. Processed material will be deposited in the container when correctly positioned.

EMPTY TRIM BIN

Toggle black tab on front of machine to a horizontal orientation. Slide Trim Bin out of slots, empty bin and replace.

NOTICE Trim Bin serves as a collection mechanism and a safety guard. Machine shall not be run without Bin in place and tabs oriented in the vertical position.

TRIMMING TIPS

For best efficiency, run batches of similar material through the machine. For a closer trim, run batches for longer durations until desired trim is accomplished.

REMOVING OBSTRUCTIONS

If the rotating slotted drum becomes restricted or clogged:

1. Stop the motor.
2. Make sure that all rotating parts have come to a complete stop.
3. Disconnect the trimmer's power cord.
4. Use a wooden stick to clear the obstruction.

SERVICING YOUR TRIMMER

Proper maintenance is essential for safe, economical, and trouble-free operation. To help you properly care for your trimmer, the following pages include a maintenance schedule. Other service tasks that are more difficult, or require special tools, are best handled by professionals and are normally performed by a Trinator technician or other qualified mechanic.

The maintenance schedule applies to normal operating conditions. If you operate your trimmer under severe conditions, such as sustained high-load or high-temperature operation, or use it in unusually wet or dusty conditions, consult your servicing dealer for recommendations applicable to your individual needs and use. Remember that an authorized Trinator servicing dealer knows your trimmer best and is fully equipped to maintain and repair it. To ensure the best quality and reliability, use only new, Trinator Genuine parts or their equivalents for repair and replacement.

NOTICE Improper maintenance, or failure to correct a problem before operation, can cause a malfunction in which you can be seriously hurt or killed. Always follow the inspection and maintenance recommendations and schedules in this owner's manual.

MAINTENANCE

Some of the most important safety precautions follow. However, we cannot warn you of every conceivable hazard that can arise in performing maintenance. Only you can decide whether or not you should perform a given task. Failure to properly follow maintenance instructions and precautions can cause you to be seriously hurt or killed. Always follow the procedures and precautions in this owner's manual.

SAFETY PRECAUTIONS

Make sure all motors are off and power cords are unplugged before you begin any maintenance or repairs.

Read the instructions before you begin, and make sure you have the tools and skills required.

MAINTENANCE SCHEDULE

INTERVAL	ITEM
Before each use	Check that shear band is snug, and in contact with slotted drum and is tightened appropriately (see pg 13) Check that machine is free of excessive debris. Ensure that the machine is clean and the drum can be rotated without power under manual force.
During use	Although not required, application of a food grade lubricant can help reduce resin build up and keep slotted drum clean.
After each use	For best performance and longevity, clean the trimmer after every use or if plant material is visibly affecting the trim quality or speed of the trimmer.
Every 10 hours of operation	For maximum wear life, rotate orientation of shear band every 10 hours or when visible signs of wear are identified. Although not re-quired, this will extend the life of the shear band.

CLEANING

WHEN TO CLEAN

Depending on the material being processed and the frequency of use, the slots of the drum may need to be cleaned after each use or periodically.

INDICATIONS THAT MACHINE REQUIRES CLEANING

- Reduced trim quality
- Visible build-up of material in the drum slots which obscure the sharp edge of the slots
- Visible evidence of material on shear band
- Excessive noise (machine should run quietly so that you may converse normally when it is running)

DISASSEMBLE FOR CLEANING

- 1. Shut off the motor. Unplug power cords.**
- 2. Release tension on the shear band:**
 - a. Turn the tension adjustment knob clockwise slightly to release tension on the ratchet.
 - b. While turning the tension adjustment as described above, flip the pawl off of the ratchet so it is no longer in contact.
 - c. Release the tension knob; the shear band will now hang freely within the trimmer.
- 3. Remove drum:**
 - a. With the motor off, power cords unplugged, and the machine in a vertical or 90 degree position, rotate the drum until the Turn-Lock pins align with the openings at the base of the drum. Once aligned, pull the drum up and out to remove.
 - b. Slide the drum gently from the machine and set it on a non-abrasive surface.
(Tip: If the drum does not come out easily check that the shear band has been re-leased as described in step 2.)
- 4. Remove Shear Band:**
 - a. Reach inside the machine and remove the shear band by gently lifting the sheet off of the metal tabs which hold it in place.
 - b. Gently remove the sheet from the machine and place it on a non-abrasive surface.

CLEANING

1. Cover the entire drum and shear band with a thick coat of cooking oil (olive, vegetable, etc). Let it sit for 3-12 hrs.
2. Using warm/hot water, concentrated dish soap and a non-metallic dish scrubber, clean the drum and other machine components by hand.

NOTICE For best results use hot water whenever possible. Be careful when selecting the degreaser that it will not damage the painted or anodized components of the trimmer. Always follow the operating instructions provided with the pressure washer.

NOTICE If you choose to use a pressure washer, take care not to damage the trimmer's finish by holding the nozzle excessively close to the machine or by focusing the spray onto the motor or timer. These components are not intended to be waterproof and water damage is excluded from warranty coverage.

REASSEMBLE AFTER CLEANING

1. Verify motor is in the OFF position and power cord is unplugged.
2. Install Shear Band

Reach inside the machine and install the shear band by gently placing the sheet on the metal tabs until all holes are resting evenly on metal tabs on both sides of the machine.
3. Install Drum

With motor off, power cord unplugged, and the machine in a vertical or 90 degree position, slide the drum gently into the machine and secure by rotating the drum.
4. Re-tension the Shear Band
 - a. Flip the pawl so it is in contact with the ratchet and prevents the ratchet from moving in a counter clockwise direction.
 - b. Turn the tension adjustment knob clockwise slightly until you encounter minor resistance and the shear band has come in full contact with the drum.

NOTICE Very little tension is needed to create an effective cutting surface. As soon as full contact between drum and shear band has been achieved, release the tension knob.

DO NOT OVER TIGHTEN. DO NOT USE TOOLS OR OTHER MECHANISMS TO TIGHTEN TENSION.

TAKING CARE OF UNEXPECTED PROBLEMS

PROBLEM	POSSIBLE CAUSE	CORRECTION
ELECTRIC MOTORS WILL NOT START OR HAVE LOW POWER	No electric power from the outlet	Plug trimmer into a functional electrical outlet.
	Outlet is overloaded	Check that breaker is not overloaded and has not tripped. If tripped, switch plug to a different circuit.
	Extension cord is faulty	Check that extension cord, if used, is rated appropriately for the distance and current. Do NOT use a longer cord unless the wire size is larger. Undersized extension cords may cause an under-voltage, over-current condition which could damage or destroy the drive motor and void the motor warranty.
	Overcurrent circuit has been exceeded	Determine the cause of the excessive circuit resistance which may include: overloaded outlet, faulty extension cord, bad outlet, underrated generator, excessively dirty machine, incorrectly tensioned shear band or an obstruction between the drum or reel and another part of the machine. Once the source of the resistance has been identified and re-solved, plug the machine back into the outlet and resume operation.

PROBLEM	POSSIBLE CAUSE	CORRECTION
TRIM QUALITY HAS DECREASED, FINISHED TRIM APPEARS ROUGH	Drum excessively dirty	Clean Drum and Shear Band.

PROBLEM	POSSIBLE CAUSE	CORRECTION
MACHINE MAKES A LOUD SCRAPING OR CLICKING SOUND	Drum and Shear Band are excessively dirty	Clean Drum and Shear Band. This is the primary cause of this issue.

PROBLEM	POSSIBLE CAUSE	CORRECTION
DRUM DOES NOT ROTATE UNDER MANUAL FORCE	Drum and Shear Band are excessively dirty	Clean Drum and Shear Band; excessive plant material has built up on these surfaces and is causing excess friction.
	Tension on shear band is too tight	Reduce tension on shear band by releasing the pawl and rotating the tension knob in a counter clockwise direction until the drum can easily be rotated under manual force and the shear band is in contact with the drum.